

CERTIFICATE OF LOCATION OF GOVERNMENT CORNER

NORTHEAST Corner of Section 32, Township 107, Range 39, 5TH P.M.

STATE OF MINNESOTA, County of MURRAY

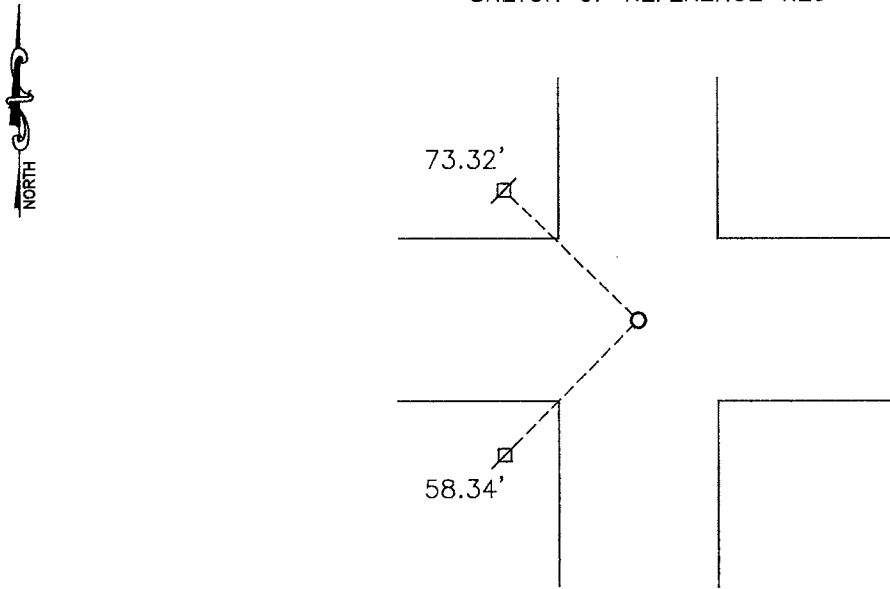
At the corner location shown on the sketch:

On 04-27-2011 found a PK nail
DATE

left monument as found, lowered monument, removed monument (explain)

On 04-27-2011 placed a survey spike with seal #43844
DATE

SKETCH OF REFERENCE TIES



Minnesota State Plane Coordinate
 System Murray County Datum
 NAD83 (1996)
 N: 168755.250
 E: 558896.850

Nail and survey marker in utility pole NW 73.32'
 Nail and survey marker in utility pole SW 58.34'

Statement of evidence relative to this corner location is on back of page.

I hereby certify that this document and the data contained herein was prepared by me or under my direct supervision.

[Handwritten Signature] 12/6/11
SIGNATURE DATE

Registration No. 43844

Land Surveyor, Professional Engineer
 County Surveyor, County Engineer

OFFICE OF THE COUNTY RECORDER
 County of _____

I hereby certify that this document was filed in the Co. Recorders office at _____ .M on the _____ day of _____ A.D. 20 _____

County Recorder _____
 By _____, Deputy

DOCUMENT NO. _____

Statement of Evidence

In 1861, L. Brockmann did the original subdivision of the township.

On April 27, 1981, the Murray County Highway Department found a concrete monument at the corner and placed an iron pin over it.

On April 27, 2011, Bueltel-Moseng Land Surveying found a PK nail at the road surface. We used the county stationing spikes set in 1981 to verify the corner. We removed the PK nail and set a survey spike with seal #43844.